

TRILOGY



ENABLING THE DURATION

environomicalliving.com

GEORGE BELFORD geo.belford@gmail.com 780.819.3777

TRILOGY

THREE BOOKS

- PRIMER
- PREVIEW
- OVERVIEW

TRULY UNIQUE

When hyphenated words are used positively the hyphen will be changed to the plus +, when they're neutral the tilde ~ will be used and when they're negative the conventional hyphen - will be used.

The positive will be taken even further, where the x (which signifies an incorrect answer) will be changed to the directly proportionate math sign \propto , except when the word is negative it will remain the x.

All writing applies justified, one line sentences that never exceed 18 words and three line sentences that never exceed 34 words, as convention says a sentence should never exceed 34 words.

ABOUT THE AUTHOR

George Belford reads the Edmonton Journal, cover to cover. He also reads online, the National Observer, Narwhal and others. This enables being well informed with a worldly perspective.

- Endured a volume of character building circumstances. Compelled the assuming of a most disciplined approach. The intent was to realize what not to do and what to do.
- Studied the science of selling, marketing and managing. Learned to effectively communicate with all consumers. The intent was consumer rapport, sales and satisfaction.
- Extended considerable time and effort learning business. Acquired a most extensive repertoire of business skill(s). The intent was to be knowledgeable on a general basis.
- Collected a mix of concept+related newspaper articles. Filed the collected newspaper articles into a data base. The intent was to be able to reference all relative events.
- Applied the scientific method effectively to all situations. Developed solutions to all relative processes and issues. The intent was to persist when unpopular, but defensible.
- Documented all personal experience(s) and learning(s). Filed experience(s) and learning(s) into a binder data base. The intent was to fully enable quick and easy referencing.
- Applied research and thought to develop the big picture. Developed a one and three line justified sentence style. The intent was to ensure concept writing is easy to read.

George Belford wrote an all inclusive Strategic Business Plan. It is officially referred to as the Environomical Living Concept. Environomical Living simply proposes Enabling the Duration.

ENVIRONOMICAL LIVING CONCEPT DEVELOPER

TRILOGY



THE ENVIRONMENT IS SERIOUSLY THREATENED.
POLLUTION IS EVERYWHERE AND GETTING WORSE.
EVEN RECYCLABLES ARE NEGLIGENTLY DUMPED.

EVERY LAST COMMUNITY MUST BE SUSTAINABLE.
THIS PRESENTS UNPRECEDENTED OPPORTUNITY.
TRANSITIONING EARLY WILL PAY BIG DIVIDENDS.

environomicaliving.com

GEORGE BELFORD geo.belford@gmail.com 780.819.3777

TRILOGY

PRIMER



ENVIRONOMICAL LIVING

SOCIAL, ENVIRONMENTAL AND ECONOMICAL

© TM

**A HIGHLY LUCRATIVE MEANS TO MODERATE
POLLUTION AND COUNTER CLIMATE-CHANGE**

EASY TO READ AND UNDERSTAND JUSTIFIED WRITING STYLE

PRIMER



ENVIRONMENTAL LIVING

#01) MINIMIZE WATER POLLUTION

#02) SLOW WATERGOING TRAFFIC

#03) REDUCE WATERGOING NOISE

#04) REDUCE SEAWATER EXPANSION

#05) COUNTER WATER SHORTAGES

#06) REDUCE EXTENDED DROUGHT

#07) REDUCE WILDFIRE INCIDENCE

#08) REDUCE LANDSCAPE EROSION

#09) MINIMIZE FLOODING EXPOSURE

ENABLING THE DURATION





ENVIRONOMICAL LIVING

#10) STOP MAN-MADE SUBSIDENCE

#11) RECOVER BIODIVERSITY LOSS

#12) REDUCE EMISSION POLLUTION

#13) STOP RESOURCE DEGRADATION

#14) ELIMINATE PLASTIC POLLUTION

#15) ENABLE CIRCULAR ECONOMY

#16) COUNTER WORK AUTOMATION

#17) MINIMIZE UNHEALTHY LIVING

#18) COUNTER FALSE INFORMATION

ENABLING THE DURATION



INTRODUCING ENVIRONOMICAL LIVING

Immunity is key to life and enabled by biological diversity. Wildlife populations have disappeared by 73% since 1970. Plants are at risk, as wildlife transfers pollens and seeds.

Fossil fuel(s) combustion is a source of vast air pollution. Wildfire season is increasing and adding to air pollution. Land and water are also facing vast pollution degradation.

Environmental abuse is everywhere and must be stopped. Enabling the Duration is very difficult, but a public priority. This requires integrating the environment and economy.

This creates what is called “Environmental Economics”. Environmental Economics shortened is “Environomics”. Mixing in the social aspect makes “Environomical Living”.

Environmental, economical and social growth is the intent. Environomical Living is ideal, as all people are included. Everyone can take part and make a personal difference.

Environomical Living will be most effectively researched. Research will verify the concept and apply development. Once the concept is prototyped, it is readily transferable.

Environomical Living is simply introduced in this book. It is supported by a series of similarly formatted books. They offer a “Programed Intelligence Operating System”.

APPLY PROGRAMED INTELLIGENCE SYSTEM



ENVIRONOMICAL LIVING DEVELOPMENT

Environomical Living will be presented in a Science Fair. The Science Fair will also include an Investment Forum. The Investment Forum will secure input and investment.

Start with mountaintop windmills, solar and pumped hydro. Pumped hydro will fall forcefully into kinetic turbine pipes. Mountaintop windmills and pumped hydrology are reliable.

Brackish water will be mined for minerals and clean water. The clean water will replace the water used by the Oilfield. Clean extra water will be used to fight drought and wildfire.

Hydrology is the first of seven developing energy sources. Pipeline safety will be offered in an Integrated Pipeline. Integration will include nine products and be spill+proof.

Alternative Grow Systems Plantations will be developed. Indigenous, Resource and Agricultural lands are required. An inclusive supply+management system will be applied.

The three land types will supply Interpretive Ecotourism. Interpretive Ecotourism is historically based hospitality. A blend of hotels, pubs and attractions will be offered.

The blend will anchor into an Environomical Living Mall. The Mall will market all Environomical Living product(s). The Mall will minimize consumer wastes and emissions.

CONCEPT PROGRAMING AND INVESTMENT



IMPLEMENTING ENVIRONOMICAL LIVING

All input and investment will be subjected to a 10% fee. The fee will fund multiple Science Fair Investment Forums. They will be branded “Environomical Living Ecpositions”.

A successful Ecposition will be universally appreciated. Communities, everywhere, require similar consideration. The Ecpositions will attract public input and investment.

Input and investment all starts with strategic partnering. See Government, nonprofit, business, education and public. Partnering includes performance, investment and equity.

Performance involves relative research and development. All applied research and development will earn revenue. It will be appropriately called “Creative Rights Revenue”.

Investment will be raised to fund all conceptual research. Equity involves the securing of all working components. This will fully enable the Environomical Living Ecposition.

The Ecposition will grow into a world+class presentation. It will include all relative events of the host community. The idea is to draw inclusive participation and visitation.

All student visitation will be enabled during school hours. All others will visit in the evenings and on the weekends. Inclusive visitation encourages full grass+roots support.

ACCOMMODATE CREATIVE RIGHTS REVENUE



ENVIRONOMICAL LIVING

#01) SCIENCE FAIR MONETIZATION

#02) ENVIRONOMICAL LIVING FUND

#03) ALTERNATIVE ENERGY SUPPLY

#04) ALTERNATIVE WATER SUPPLY

#05) POWERLINE TUNNEL NETWORK

#06) ALTERNATIVE GROW SYSTEMS

#07) ALTERNATIVE GROW STAGING

#08) HISTORY BASED HOSPITALITY

#09) ENVIRONOMICAL LIVING MALL

ENABLING THE DURATION

environomicaliving.com



PRIMER

 **ENVIRONOMICAL LIVING**
SOCIAL, ENVIRONMENTAL AND ECONOMICAL
© TM

RESEARCH THE ENVIRONOMICAL LIVING CONCEPT.
APPLY YOUR PERSONAL FIELD OF STUDY OR WORK.
DEVELOP YOUR OWN CONCEPT+RELATIVE IDEA(S).

OFFER YOUR IDEA(S) AND SECURE INVESTMENT.
EARN EQUITABLE CREATIVE RIGHTS REVENUE.
MAKE A DIFFERENCE AND GO DOWN IN HISTORY.

environomicaliving.com

GEORGE BELFORD geo.belford@gmail.com 780.819.3777

PRIMER

PREVIEW

 **ENVIRONOMICAL LIVING**
SOCIAL, ENVIRONMENTAL AND ECONOMICAL
© TM

**A HIGHLY LUCRATIVE MEANS TO MODERATE
POLLUTION AND COUNTER CLIMATE-CHANGE**

EASY TO READ AND UNDERSTAND JUSTIFIED WRITING STYLE

PREVIEW

**Degraded Environment
Economics has Priority
Perpetuity is the Intent**

Environomical Living is based on the reality that the environment is compromised. The environment is compromised, generally because the economy has priority. There is a lot of talk of compromise, but the reality is we are all out of compromises.

Environomical Living is designed to integrate the economy, environment and society. Environmental and economical integration is called Environmental Economics. Environmental Economics will be shortened into the new word Environomics.

Environomics will then be united with Living into the social term Environomical Living. Environomical Living will be researched and developed in all relative locations. All participating locations will combine to provide the needed conceptual input(s).

Environomical Living enables moving away from burning fossil fuel(s) and deforestation. Moving away from fossil fuel(s) and deforestation is a way of Enabling the Duration. Fossil fuel(s) should be managed as public property that offers benefits in perpetuity.

Environomical Living initiates effective recovery of the environment and economy. Such a difficult task must be achieved to accommodate humankind for the duration. Biological diversity is the enabler of immunity for all life and must be preserved.

Environomical Living offers a means to apply truly effective, long+term sustainability. The move to environmental, economical and social sustainability requires inclusion. Environomical Living is ideal, as every single known entity is appropriately included.

Environomical Living is effectively explained in this relatively simple to read book. The concept is supported by a series of similarly formatted books and webpage. The trilogy, series and webpage offer a Programed Intelligence Operating System.

**Immunity is Essential
Collective Transition
Long+Term Recovery**



Abbreviated Conceptual Preview Enabling Environomical Living Research and Development



Environomical Living will be appropriately displayed in an inclusive Science Fair. The Science Fair will apply an Investment Forum that secures investment capital. An academic and conceptual network will direct the Science Fair Investment Forum.

The concept starts with mountaintop windmills, photovoltaic solar and pumped hydro. Deep geothermal, green hydrogen and battery storage will add more inertia to the eGrid. Wave and Tidal are also non intermittent and Nuclear Fusion Energy is being developed.

The wind always blows on the top of mountains, so electrical grid inertia is enabled. Brackish oilfield waste water is an abundant supply of minerals and Alternative Water. The resulting Alternative Water will be sourced to counteract drought and wildfire.

Hydrology Energy is the first of seven developing Alternative Energy Sources. Inclusive pipeline security will be enabled, via a totally Integrated Pipeline Network. Total integration includes a spill+proof application of nine different product lines.

The concept also applies the use of Indigenous, Resource and Agricultural lands. The three applied lands will be combined into Alternative Grow Systems Plantations. The Alternative Grow Systems Plantations will be appropriately supply+managed.

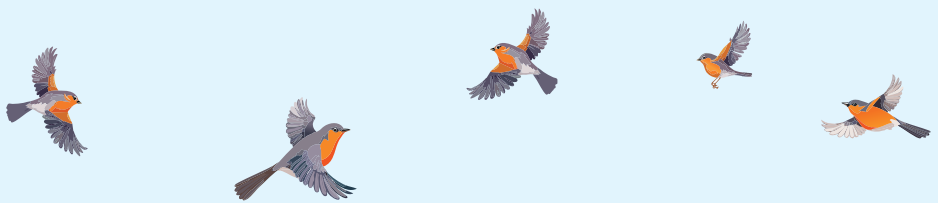
Alternative Grow Systems Plantations are the suppliers of Interpretive Ecotourism. Interpretive Ecotourism applies a hospitality chain that is branded as "Pastiming". Pastiming includes a related affiliation of history+based hotels, pubs and attractions.

Environomical Living Pastiming will be enabled from an Environomical Living Mall. The Mall applies the full line+up of Environomical Living Product(s) and Service(s). Environomical Living is designed to counteract hazardous environmental conditions.

Inclusive Science Fair Public Investment Forum Practically Applies Everyone



All Inclusive Study
Multi+Purposed Intent
Public+Wide Acceptance



The Science Fair Investment Forum will effectively accommodate Environomical Living. The combination will be simply called the Environomical Living Ecposition or Ecpo. The intent is to secure strategically relevant research and development investment.

The Environomical Living Ecposition will apply two separate, integrated components. The first component includes an intensively applied review of Environomical Living. The second component includes an effectively related Investment Forum Presentation.

All secured investment, less 10%, will enable partnered research and development. The 10% will avail development of multiples of the Environomical Living Ecposition. Multiple development of the Ecposition will offer vast participation and investment.

All communities need the same social, economical and environmental consideration. A successful Environomical Living Ecposition will be welcome practically anywhere. It is designed to be universally applicable, financially profitable and readily portable.

The Environomical Living Ecposition includes the securing of effective partnerships. Effective partnering includes Government, nonprofit, business, education and public. Ideas, designs, artworks, publications, artifacts, lands and buildings will be applied.

The Environomical Living Ecposition will be grown into a World+Class Ecposition. It will be presented in support of the publicly offered events of the host community. Coinciding with concept+related heritage events will appropriately add to visitation.

Scholastic attendance will be applied during school hours, all throughout the week. All other visitors will be encouraged to attend in the evenings and on the weekends. Public+wide buy+in is required to bring about the transition to Environomical Living.

World+Class Ecposition
Enlighten Entire Public
Public+Wide Buy+In



**All Educational Participation
Environmental Living Concept
Science Fair Investment Forum**



All Educational Institutions will be duly approached and encouraged to take part. The department heads will review the concept and target the needed participation. Research based academics will be selected, considered, appointed and networked.

The academic network will study and review the concept and offer how to proceed. All submissions will be presented according to an architecturally structured format. Consistent architectural structure is the best way to enable conceptual integration.

The academic network will effectively develop the Environmental Living Exposition. All students and instructors from the academic community will offer applied input. Inclusively applying academia ensures that nothing will be inadvertently missed.

All submissions will be presented to a conceptual network for review and revision. The conceptual network will work in full cooperation with the academic network. All approved submissions will be available to the exhibitor network for development.

Sponsorships and inputs will be officially secured and applied to create all exhibits. The Science Fair Investment Forum will be developed into a World+Class Exposition. The Science Fair Investment Forum will raise the required concept development funds.

All proceeds will be appropriately applied, according to the investment agreement. All conceptually required research and development will be effectively undertaken. A World+Class Exposition will attract vast crowds of domestic and foreign visitation.

Attracting all sectors of the public to visit and offer investment is completely doable. Investment is open to all, as it can be secured with performance, equity or capital. All such investment offers Creative Rights Revenue to all parties that participate.

**Entirely Enabled Academia
Inclusively Applied Input
Creative Rights Revenue**



Publicly Offered Science Fair Enable Students and Workers Attract Grass+Roots Support

All Educational Institutions will take part in the Science Fair Investment Forum. Every student, regardless of academic standing, will be encouraged to participate. Including all workers, as well, ensures that there is a grass+roots say in the future.

Family and friends will offer personal input on the participating exhibitors project. Sponsors will be officially secured and committed to enable inclusive participation. The sponsors will provide relative science fair coaching, judgement and funding.

The intent is to offer an extensive conceptual presentation on Environmental Living. Concept success will be ensured by the securing of valid support and participation. A full contingent of all proposed Environmental Living components will be secured.

Domestic investment confidence is the driver to the attracting of global investment. A fully subscribed domestic Public Limited Partnership Fund (PLPF) shows support. It will include a concept+related mix of General, Sub+General and Limited Partners.

The Generals will oversee project capitalization, management and implementation. The Sub+Generals will supply subordinate+operations that offer secondary input(s). The Limiteds will offer concept+related performance, equity and capital investment.

All Public Limited Partnership Investors will officially agree to a 10% investment fee. The 10% fee will avail multiple development of the Environmental Living Exposition. 90% of Public Limited Partnership Investment will go to research and development.

All research and development will be copyright, trademark and patent accredited. The Researchers, Sponsors and Environmental Living will share accredited ownership. Copyrights, trademarks and patents will be offered for the intent of initiating start+up.

Public Limited Partnership Research and Development Conceptual Accreditation



ENVIRONOMICAL LIVING EOCP RESEARCH AND DEVELOPMENT



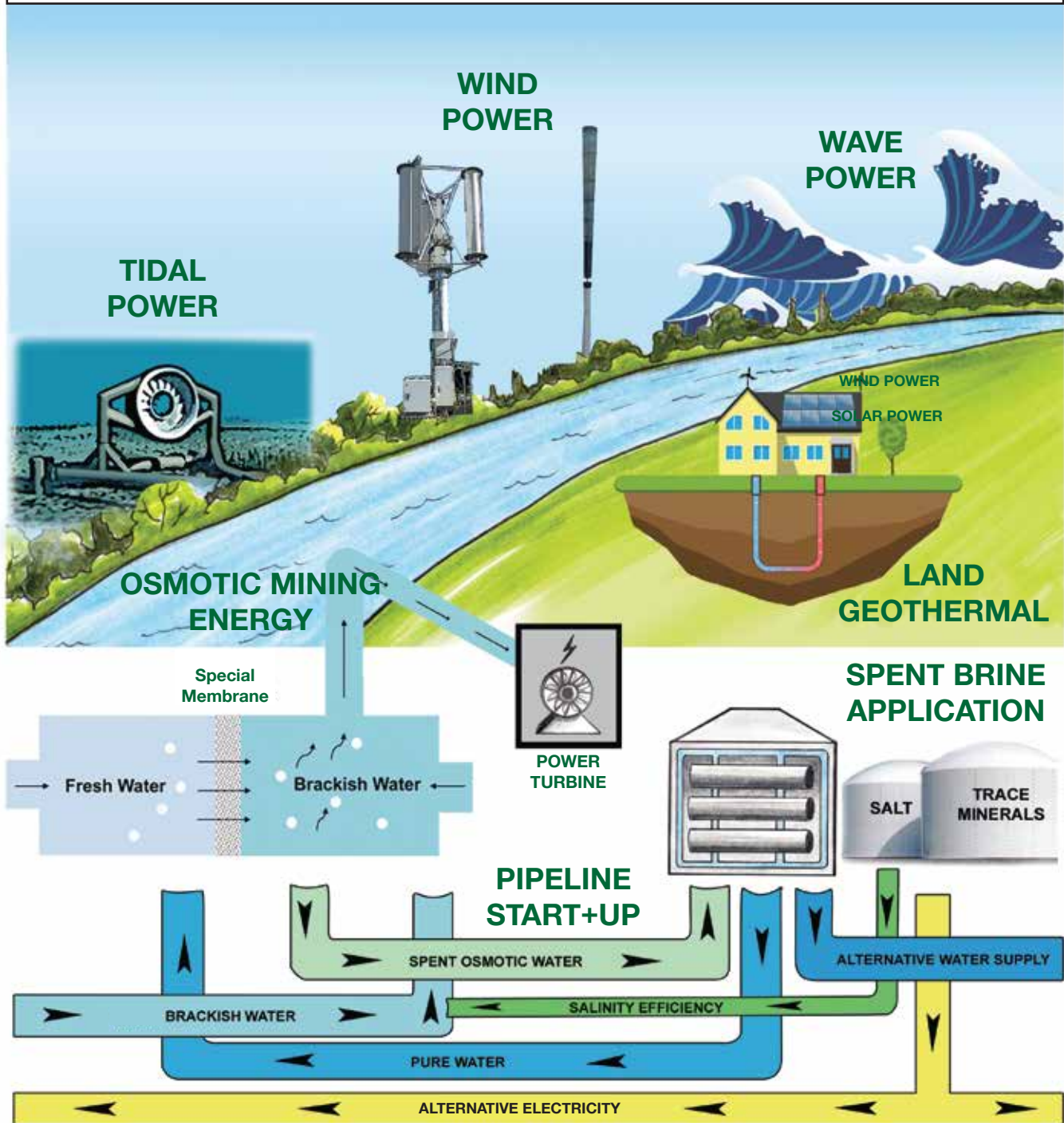
APPLY ALTERNATIVE SYSTEMS

- #01) ENVIRONOMICAL LIVING SCIENCE FAIR INVESTMENT FORUM
- #02) PUBLIC LIMITED PARTNERSHIP CREATIVE RIGHTS REVENUE
- #03) ALTERNATIVE ENERGY FROM SEVEN DEVELOPING SOURCES
- #04) DOWNHOLE MINERALOGY AND ALTERNATIVE WATER MINING
- #05) INTEGRATED PIPELINE IN SPILL+PROOF TUNNEL NETWORK
- #06) INDIGENOUS, RESOURCE AND AGRICULTURAL GROW SYSTEMS
- #07) GROW SYSTEMS STAGING STATION PRODUCER COOPERATIVES
- #08) INTERPRETIVE ECOTOURISM HOTELS AND PUBS MUSEOLOGY
- #09) ENVIRONOMICAL LIVING MALL WITH AGRICULTURAL CENTRE

PUBLIC LIMITED PARTNERSHIP FUND (PLPF)

ALTERNATIVE ENERGY FROM SEVEN DEVELOPING SOURCES

HYDROLOGY, EARTH, WEATHER, BIODEGRADABLES, FISSION, FUSION AND BATTERY



ACCOMMODATES SUSTAINABLE GROWTH

ALTERNATIVE ENERGY FROM HYDROLOGY ENERGY SYSTEMS

MINERALS MINED FROM ALL HYDROLOGY SOURCES

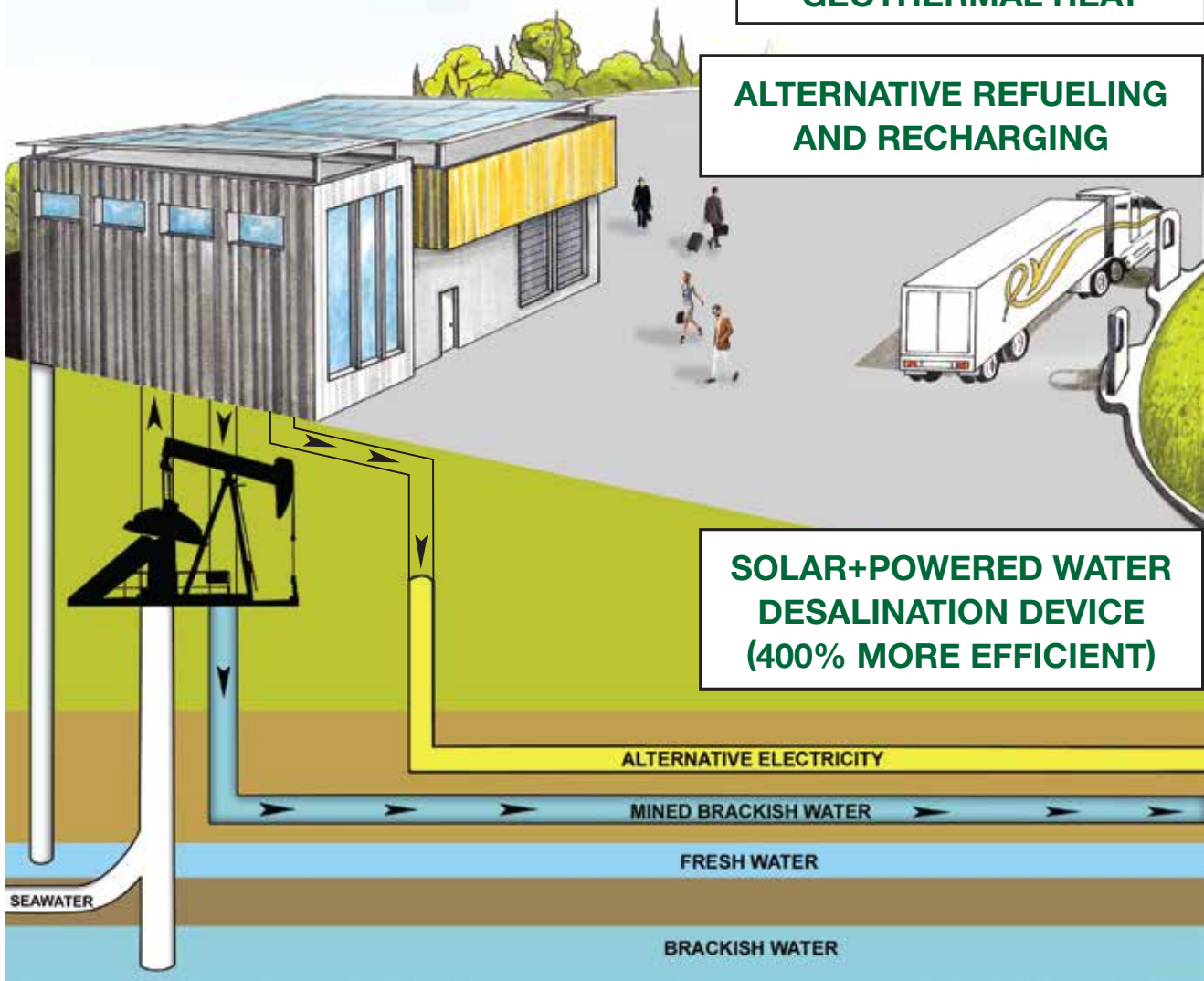
- Lithium
- Manganese
- Zinc
- Silica
- And Others

TIDAL AND WAVE POWER WILL PUMP SEAWATER TO THE HYDROLOGY MINES

SOURCE SPENT OIL WELLS FOR BRACKISH WATER MINERALS AND GEOTHERMAL HEAT

ALTERNATIVE REFUELING AND RECHARGING

SOLAR+POWERED WATER DESALINATION DEVICE (400% MORE EFFICIENT)



ENABLES RESPONSIBLE MINERAL MINING

ALTERNATIVE ENERGY FROM ORGANIC BIODEGRADABLES



FORESTRY WASTE



AGRICULTURAL WASTE



AGRICULTURAL SEWAGE



HUMAN SEWAGE



INFRASTRUCTURE WASTE



CONSTRUCTION WASTE



LANDSCAPE WASTE




KITCHEN WASTE



DUMP WASTE

Alternative Energy and Recyclable Waste offers a means to convert conventional waste to a sustainable resource.

ALTERNATIVE WATER	 <p>PIPELINE TUNNEL SYSTEM OFFERS SPILL+PROOF SECURITY</p>
INCLUSIVE SEWAGE	
ALTERNATIVE ELECTRICITY	
WI+FI AND CABLES	
CARBON FIBRE BITUMEN	
PNEUMATIC TRANSFER	
RENEWABLE NATURAL GAS	
RECYCLED CONVENTIONAL OIL	
MAINTENANCE SPARE	

ACCOMMODATES A CIRCULAR APPROACH

ALTERNATIVE ENERGY FROM NUCLEAR FISSION AND FUSION



SMALL MODULAR REACTOR




Spent Fission Reactor Waste Provides SMR Fuel Cartridges



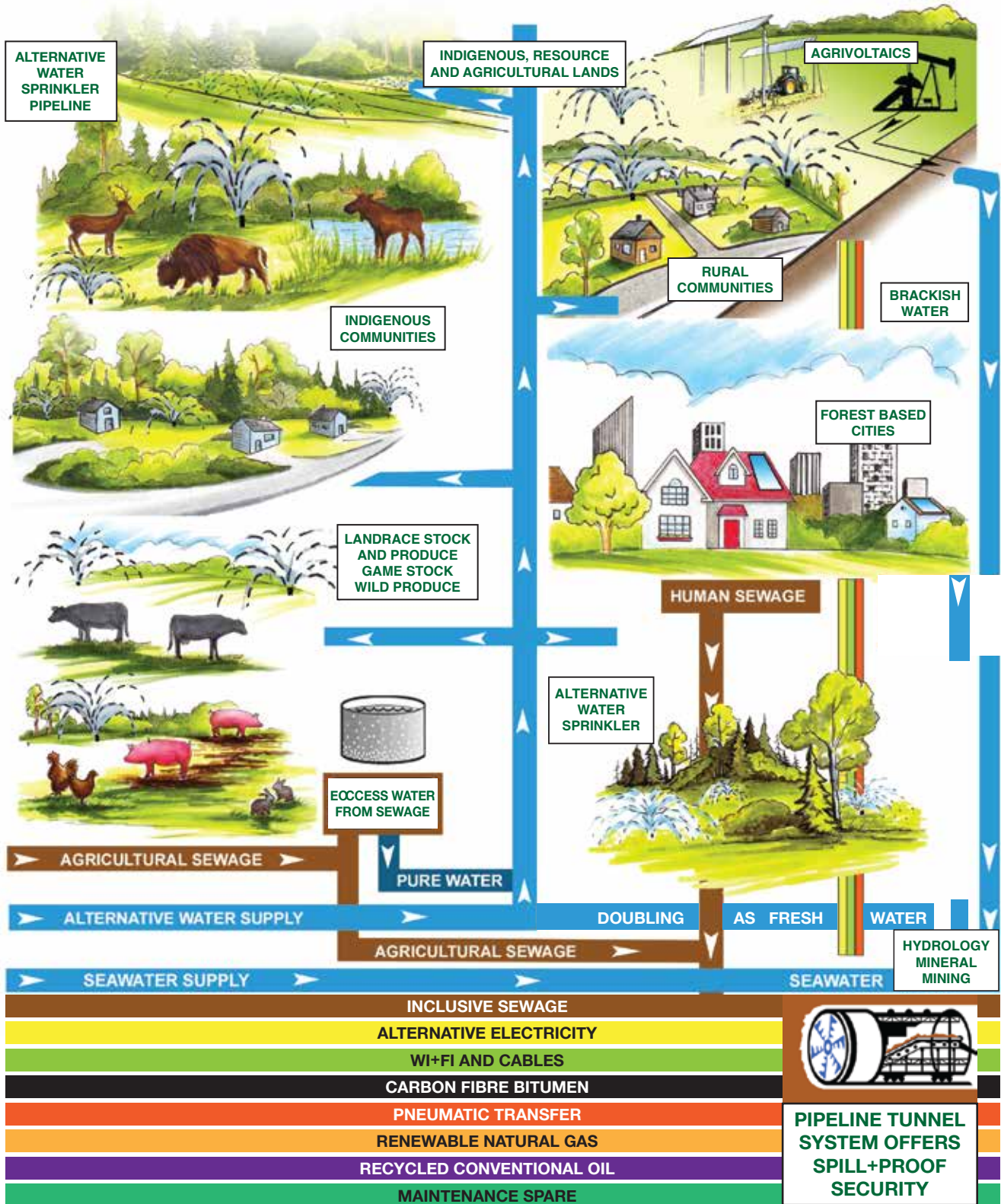
FUSION POWER PLANT

Fusion Energy requires deuterium and tritium, isotopes of hydrogen, which are derived from seawater and lithium.

ALTERNATIVE WATER	 <p>PIPELINE TUNNEL SYSTEM OFFERS SPILL+PROOF SECURITY</p>
INCLUSIVE SEWAGE	
ALTERNATIVE ELECTRICITY	
WI+FI AND CABLES	
CARBON FIBRE BITUMEN	
PNEUMATIC TRANSFER	
RENEWABLE NATURAL GAS	
RECYCLED CONVENTIONAL OIL	
MAINTENANCE SPARE	

PRODUCES ZERO EMISSIONS AND EFFLUENT

ALTERNATIVE ENERGY WATER OFFERS ALTERNATIVE WATER



COUNTERACTS DROUGHT AND WILDFIRE

INDIGENOUS, RESOURCE AND AGRICULTURAL PLANTATIONS

APPLIES HYDROLOGY, WEATHER, WILDLIFE, FORESTRY, AGRICULTURE, MINING AND ENERGY

APPLIED PRODUCTS ARE WILDPRODUCE, GAME STOCK, WILDLIFE, LIVESTOCK, COTTAGE, RENEWABLES AND ECOTOURISM



WILDING (LANDSCAPE) PRODUCTIONS
 Weeds • Fruits • Berries • Trees
 Herbs • Fungus • Cereals

WILDRICE FARMING

ALTERNATIVE WATER	<p>PIPELINE TUNNEL SYSTEM OFFERS SPILL+PROOF SECURITY</p>
INCLUSIVE SEWAGE	
ALTERNATIVE ELECTRICITY	
WI+FI AND CABLES	
CARBON FIBRE BITUMEN	
PNEUMATIC TRANSFER	
RENEWABLE NATURAL GAS	
RECYCLED CONVENTIONAL OIL	
MAINTENANCE SPARE	

FACILITATES ALTERNATIVE GROW SYSTEMS

PLANTATION STAGING STATION PRODUCTION COOPERATIVES

AGRICULTURAL SEWAGE



NATURAL HERBICIDE



AGRICULTURAL SEWAGE



PRODUCER PRODUCTION



BIOFUEL PLANT



PRODUCER WAREHOUSE

ALTERNATIVE WATER

INCLUSIVE SEWAGE

ALTERNATIVE ELECTRICITY

WI+FI AND CABLES

CARBON FIBRE BITUMEN

PNEUMATIC TRANSFER

RENEWABLE NATURAL GAS

RECYCLED CONVENTIONAL OIL

MAINTENANCE SPARE



PIPELINE TUNNEL
SYSTEM OFFERS
SPILL+PROOF
SECURITY

FACILITATES ALTERNATIVE GROW STAGING

INTERPRETIVE ECOTOURISM MUSEOLOGY AND HOSPITALITY



**PROPOSED INDIGENOUS
RECONCILIATION CENTRE**

**ORIGINAL ROYAL ALBERTA
MUSEUM LOCATION**



- ECOTOURS**
- Ghost Communities
 - Historical Travel
 - Trade Routes
 - Fur Trade
 - Colonies



**TIME
WARP
TO
THE
PAST**



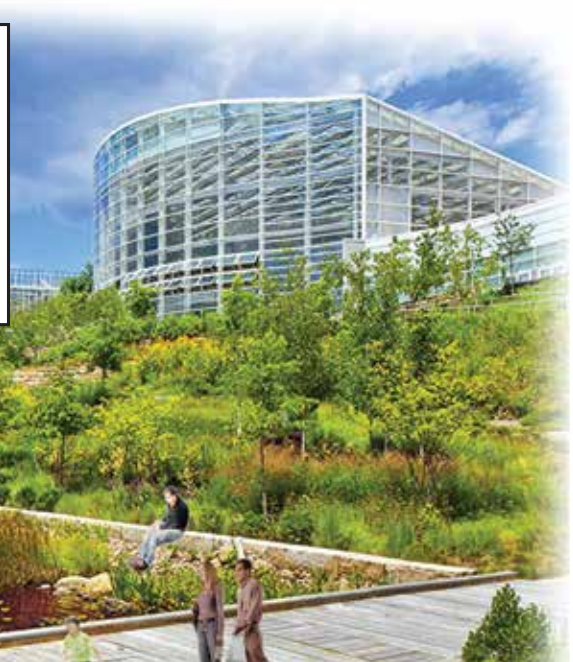
- ALTERNATIVE WATER
- INCLUSIVE SEWAGE
- ALTERNATIVE ELECTRICITY
- WI+FI AND CABLES
- CARBON FIBRE BITUMEN
- PNEUMATIC TRANSFER
- RENEWABLE NATURAL GAS
- RECYCLED CONVENTIONAL OIL
- MAINTENANCE SPARE

**PIPELINE TUNNEL
SYSTEM OFFERS
SPILL+PROOF
SECURITY**

OFFERS SUSTAINABLE PASTIMING GROWTH

ENVIRONOMICAL LIVING MALL WITH AGRICULTURAL CENTRE

AGRICULTURAL INTERPRETIVE
 Glass enclosed views and visitation that includes a Livestock Presentation


ONE+STOP SHOPPING FOR ENVIRONOMICAL LIVING
 The Environomical Living Mall offers an all inclusive line+up of products and services that enables the public to learn all about and take+up ENVIRONOMICAL LIVING



ALTERNATIVE VEHICLE RECHARGING AND REFUELING




ALTERNATIVE VEHICLE SHIPPING AND RECEIVING



ALTERNATIVE GROW SYSTEMS PRODUCERS MARKET



- ALTERNATIVE WATER
- INCLUSIVE SEWAGE
- ALTERNATIVE ELECTRICITY
- WI+FI AND CABLES
- CARBON FIBRE BITUMEN
- PNEUMATIC TRANSFER
- RENEWABLE NATURAL GAS
- RECYCLED CONVENTIONAL OIL
- MAINTENANCE SPARE



PIPELINE TUNNEL SYSTEM OFFERS SPILL+PROOF SECURITY

ACCOMMODATES ENVIRONOMICAL LIVING

Economic Hygiene Essential Services Non Compliance Risk



Pandemic health risk is when a disease is prevalent in a whole country or the world. Social and economic hygiene is the maintaining of health and prevention of disease. Essential services are services that, if interrupted, can endanger the general public.

The first thing that must be considered is the economical contractual obligations. Clauses that allow for non compliance, in unforeseen circumstances, will be normal. Contracts, from now on, will contain pandemic health risks and require insurance.

Essential services work sites must adhere to the highest workplace safety standard. Infection control will include fever testing, worker screening and workplace hygiene. Workers will wear special gloves, masks and glasses and hand sanitize regularly.

Physical distancing will affect location meetings and limit the worksite population. This will have a tremendous impact on job completion scheduling and timeliness. Public social distancing will greatly impact public walkways and business outlets.

Outlet foyers will be regularly fog sanitized and provide body temperature sensing. Foyers will include hand sanitizing and offer dispensing of gloves, masks and glasses. Sanitizing of workplace counters, tools and equipment will become standard protocol.

Social distancing will be enabled with one way aisle arrows that direct outlet traffic. Reception, service, till and seating shields will be applied with floor sticker spacing. Hands free doors and payment will be required, along with easy to sanitize menus.

Controlling the volume of business or venue attendance will become the norm. Product returns will become an issue and require hygienic management systems. Everyone will be required to download and effectively use a contact tracing app.

Business Changes Health Secure Business Contact Tracing



Economic Transition
Recover Biodiversity
Enable Earthly Life



There has been close to 500,000 oil wells developed in Alberta, since May of 1914. There is also close to 500,000 km's of operational pipeline infrastructure in Alberta. Fossil fuel(s) economies are seriously reducing the structural integrity of the planet.

Fracking applies inner core cracking and fossil fuel(s) extraction causes vast voidage. Over-exploitation of the water aquifer system adds even further to the voidage. These events weaken the inner strength of the planet and bring on subsidence.

Subsidence is when the land subsides and cannot be re+inflated by pumping in water. Animal wildlife populations have disappeared by 70 percent over the last 60 years. Animal wildlife transfers many pollens and seeds, so plant life is also compromised.

The germ plasm is the foundation to life and accommodated by biological diversity. Biological diversity must be effectively preserved, as it is the basis to immunity. Immunity sustains life, as it is the enabler of disease resistance and injury recovery.

The late Steven Hawking was convinced that humankind is destroying the planet. He said, "we will need to leave the planet in 1,000 years, then later revised it to 100". We will need to abandon the planet, as it is becoming increasingly hazardous to life.

We will be forced to vacate the planet, simply because of unsustainable practice(s). When all the fossil fuel(s) reserves are depleted, what will we then use for lubrication? We need to stop combusting of fossil fuel(s), as they are a non renewable resource.

Fossil fuel(s) economies typically ignore that burning fossil fuel(s) is unsustainable. Governments need to face reality and go about enabling fossil fuel(s) for the duration. Taxation needs to move away from income and profit to consumption and pollution.

Economic Reality
Planetary Survival
Enable the Duration



Methane and Carbon
Heat Entrapment
Arid Desertification



Vast volumes of heat trapping methane and carbon are released into the atmosphere. Elusive and naturally occurring methane are even worse air pollutants than carbon. Besides polluting air, carbon also acidifies water ecosystems, which harms waterlife.

Declining arid rainfall and global climate-warming are enabling rapid desertification. The Sahara Desert is traveling southward at a rate of almost 50 kilometres per year. Global ocean-warming is the common cause of coral reef and phytoplankton die-off.

Coral reefs support a quarter of all marine species and close to half a billion people. Phytoplankton is micro+algae that facilitates marine ecology and oxygen production. Sea ice, icebergs, glaciers, snow pack and the relative wildlife are in serious decline.

Inclemency is the main cause of flash flooding, land movement and raging wildfire. Global fossil fuel(s) reserves are rapidly declining and consumption is rapidly inclining. Reserves now include area(s) once considered too fragile, difficult and costly to tap.

Combustion of fossil fuel(s) for power generation is the largest source of air pollution. Air pollution avails the greenhouse effect and keeps excess heat in the atmosphere. Hydro alters water flow and temperature and puts fish, deltas and tradition at risk.

New hydro dams drown plants and organic matter, which then rot and emit methane. Phosphorous rich run-off typically avails the growth of algae that consumes oxygen. Coastlines everywhere are experiencing ever increasing eutrophication and erosion.

Fish-kills occur regularly, as fish need cooler waters that are often oxygen deprived. Hydrological-warming is forcing all fish populations to migrate toward cooler waters. Mass migration of fish stocks to cooler waters will deplete the traditional fish stocks.

Vast Air Pollution
Oxygen Depletion
Upset Environment



Volumes of Pollution

Songbird Endangerment

Questionable Agriculture



Plastic pollution is everywhere and negatively impacting every single life form. Burning wood for warmth and ambience emits huge amounts of carbon and soot. Carbon and soot emissions impede sunlight, dirty everything and hinder respiration.

Lawn care now requires a heavy use of pesticides, herbicides, fertilizers and water. Non indigenous flora and fauna are seriously endangering indigenous ecosystems. Tall buildings maim and kill vast numbers of birds and facilitate extreme turbulence.

The domestic and feral house cat, along with forestry is endangering songbirds. Habitat loss and illegal hunting are impacting the overall biodiversity level of nature. Predatory fish are being over fished, which enables forage fish populations to thrive.

Agriculture is slowed by volatile market conditions and ever increasing input cost(s). Heavy use of fertilizers, pesticides, herbicides, hormones and antibiotics is common. 77% of the entire farmland area on the planet is allocated to the raising of livestock.

Some everyday on-the-land and on-the-farm practices are extremely questionable. Slow-death slaughtering and cage rearing are the two most questionable practices. Both practices effectively facilitate texture tenderness, display appeal and shelf life.

Animals are bred for market related attributes and artificial insemination is common. Turkeys are bred for oversized breasts, which makes mating completely impossible. Cattle are bred so big they are lousy foragers and require vast pasture and feeding.

A kilo of chicken takes 4,000 litres of water and a kilo of beef takes 14,000 litres of water. Livestock is generally responsible for the polluting of vast volumes of ground water. All future social, environmental, economical and political issues will be water based.

Artificial Insemination

Livestock Water Impact

Water Based Future



Intensive Mineral Mining Huge Disposal Challenge Aluminum Sustainability



Intensive mining produces the largest pollution stream of any industry on the planet. The pollution stream applies vast volumes of waste mineral rock and tailings ponds. Waste mineral rock is the simplest to handle and dispose of in a landscape process.

Waste mineral rock disposal includes unnatural mountainous topographical change. Tailings ponds are a water rock slurry that enables waste mining materials to settle. Tailings ponds are an extreme hazard, as they typically include toxic mining debris.

Open pit mining causes long-term land degradation and vast water and air pollution. Hydraulic mining applies extensive volumes of high pressure water to wash the ore. The environmental issues with intensive mining are vast and need to be addressed.

Aluminum is derived from bauxite ore, which is sourced exclusively from the tropics. Bauxite offers sustainability and is one of the more plentiful minerals on the planet. Aluminum smelting is typically situated in regions that facilitate low-cost electricity.

The issue with bauxite mining and aluminum smelting are air and water pollution. Both processes are very hazardous, as they include the use of conventional energy. Municipal landfills are where aluminum beverage cans are dumped in vast volumes.

Aluminum is toxic, when incinerated, and can take almost 500 years to decompose. Recycling just 96 aluminum beverage cans actually conserves considerable energy. The energy saved would facilitate the operation of a laptop computer for thirty days.

Aluminum and plastic industries would benefit significantly by enabling recycling. Equitable recycling of both industries brings on the reduction of mining extraction. The move from extraction to recycling is required to enable environmental recovery.

Air and Water Pollution 500 Year Decomposition Minimize Ore Extraction



Environmental Industry Aluminum is Lightest Metal For+The+Long+Term Builds

Aluminum mining is long+term, as it is one of the few sustainable mining processes. All aluminum construction effectively enables the minimizing of automotive pollution. Aluminum is corrosion resistant, heat conductive and deflects light and radiant heat.

All aluminum accommodates the applying of the for+the+long+term buying approach. Aluminum is sourced from a plentiful mineral and is the best way to minimize weight. Aluminum recycling is viable, as it takes only 5% of what it took originally to make it.

Auto, RV and Off-Highway vehicle weight(s) can be minimized, via aluminum builds. Effective minimizing of vehicle weight(s) reduces fuel consumption and air pollution. Aluminum construction is perfect for the applying of the long+term+buying+approach.

Aluminum materials will be further applied in housing to enable equity and longevity. Aluminum and carbon fibre construction is a viable way to minimize RV depreciation. RV housing will fully facilitate the owning, storing and in~home maintaining of an RV.

Volumes of Off-Highway'ers and RV'ers commonly commit environmental abuse. Abuse includes waste dumping and garbage littering with trail and waterway rutting. Some Off-Highway'ers chase wildlife, which causes stress, fatigue and often death.

Abusive Off-Highway'ers and RV'ers often conflict with other recreational land users. The OHV and RV Industries need to effectively self+police and enable sustainability. For+the+long+term+construction is a great way to counter the depreciation factor.

Economics needs to minimize resource extraction and apply recycling and recovery. The environment enables all life and economics accommodates humankind activity. The environment is the sole enabler of all life and should always be considered first.

Off+Road+Self+Policing Sustainable End Use Environmental Priority



**Premature Deaths
Salty and Sweet Bias
Profit Takes Priority**



It is common to ignore reality, resist change, be materialistic and live excessively. The public needs to reduce resource consumption and accommodate sustainability. Economics must change on a common basis, as many practices are unsustainable.

Salt and sugar consumption is the cause of many diseases and premature deaths. Processed fare is the normal way for the consuming public to ingest salt and sugar. Salt and sugar are highly addictive and enable a preference for salty and sweet fare.

Fare that minimizes salt and sugar is considered a low demand product by processors. Salt and sugar offers a low-cost means to avail flavour and accommodate shelf life. Fare processors fear that cutting back on salt and sugar use will reduce profitability.

It is most prudent to encourage a certain aptitude for ruthlessness and aggression. This certain aptitude for ruthlessness and aggression is fully related to profitability. Profitability often takes precedence, regardless of the harm or injustice that occurs.

Profitability is the most common justification for sacrificing a few for the good of all. A prime example is when staff are hired as a stopgap and then conveniently let-go. Work loss negatively effects household income, future prospects and social equity.

The mature economies often lower environmental standards to enable competition. The immature economies feel that the mature economies are the most responsible. Everyone needs to get real, stop infighting and join together to enable sustainability.

Global terrorism, social unrest and mass migration needs to be properly addressed. It is best that we completely understand the issues and not respond with prejudice. If we effectively reduce water shortages, social confrontation will also be minimized.

**Environmental Standards
Universal Water Shortages
Minimize Confrontation**



PREVIEW

 **ENVIRONOMICAL LIVING**
SOCIAL, ENVIRONMENTAL AND ECONOMICAL
© TM

THE ENVIRONMENT IS SERIOUSLY THREATENED.
POLLUTION IS EVERYWHERE AND GETTING WORSE.
EVEN RECYCLABLES ARE NEGLIGENTLY DUMPED.

EVERY LAST COMMUNITY MUST BE SUSTAINABLE.
THIS PRESENTS UNPRECEDENTED OPPORTUNITY.
TRANSITIONING EARLY WILL PAY BIG DIVIDENDS.

environomicalliving.com

GEORGE BELFORD geo.belford@gmail.com 780.819.3777

PREVIEW

OVERVIEW

 **ENVIRONOMICAL LIVING**
SOCIAL, ENVIRONMENTAL AND ECONOMICAL
© TM

**A HIGHLY LUCRATIVE MEANS TO MODERATE
POLLUTION AND COUNTER CLIMATE-CHANGE**

EASY TO READ AND UNDERSTAND JUSTIFIED WRITING STYLE

OVERVIEW

**Environomical Living
Environmental Security
Economic Diversification**



Environomical Living is purposed to assist the environment, economy and society. It is a way to moderate pollution, counter climate-change and earn money doing it. Environomical Living is ideal, as it applies all people, regardless of financial means.

You are being graciously approached with the intent of securing your participation. Participation begins with clicking like and sharing with friends, relatives and peers. Additional participation includes donating, performing, sponsoring and investing.

The concept is introduced with an Introductory Letter, Business Card and Mailer List. It is further presented and explained with Promotional Posters and the Trilogy Book. This is followed by a Conceptual Webpage and Book Series in system design detail.

The pundits all say, "when expanding on an idea, always think big, but start small". The "thinking big" aspect of the idea is it offers viable multi-billion dollar potential. It "starts small" with this book and prototyping of the Science Fair Investment Forum.

Ever since we stopped being hunters and gathers, we have been polluting the nest. Humankind must accept responsibility for the soiled condition of the environment. The environment is borderless, so environmental security requires inclusive action.

Regardless of how small the environmental footprint is, everyone must take action. Enabling the Duration requires that the biodiverse proliferation of life is the priority. The term biodiverse is new and defined as biological diversity among all life forms.

Biodiversity enables life, as it accomodates disease resistance and injury recovery. Environomical Living presents a most appropriate revenue and legacy opportunity. For indepth details on Environomical Living, read the supporting series of books.

**Environment Is Borderless
Everyone Must Take Action
Biodiversity Enables Health**



**Desirable Quality of Life
Economic Development
Environmental Security**



There are three constants that must be considered to apply a desirable quality of life. The first constant is the environment, which enables the proliferation of all life forms. The other two are the economy and society, which enables all humankind activity.

The problem is economical and social activity are rapidly degrading the environment. It is common for economics and society to be considered ahead of the environment. Economical and social activity typically necessitates environmental compromise.

Environmental compromise generally compounds into environmental degradation. Traditional Resource infrastructure is further adding to environmental degradation. Environmental degradation is related to emission, effluent and waste pollution.

What needs to be realized by everyone is biodiversity enables immunity and health. Depleting biodiversity is foolish, as it puts the long-term existence of all life at risk. The question is not how to remain status quo, but how to enable ongoing advancement.

The answer is simple, effectively integrate the environment, economy and society. Effective integration offers economical diversification and environmental recovery. A direct result of effective integration is inclusive cooperation and social well+being.

Environmental and economical integration is simply called Environmental Economics. Environmental Economics is concerned with the environmental cost of humankind. Environmental Economics is best presented as environment based cost accounting.

Environmental Economics is most often simply and casually called Environomics. Environomics is united with living to make the social term, Environomical Living. Environomical Living accommodates social, economical and environmental security.

**Inclusive Cooperation
Social Well+Being
Environmental Economics**



Transitioning is Inevitable Truly Sustainable Approach Consider Every Possibility

It is simple to understand that profitability is not good, if a lifeform is compromised. The viability of the balance sheet or amount of money in the bank does not matter. If an economy is founded on environmental risk, it is unsustainable and short-term.

It must be generally accepted that profit is indefensible, if a lifeform is compromised. The question is not how to sustain the status quo, but how to enable the transition. Those who accept the transition is inevitable and get in early will benefit the most.

The transition requires effective applying of an entirely sustainable approach to life. Sustainability must become a common goal, if humankind is to last for the duration. Environomical Living effectively offers just such a truly sustainable approach to life.

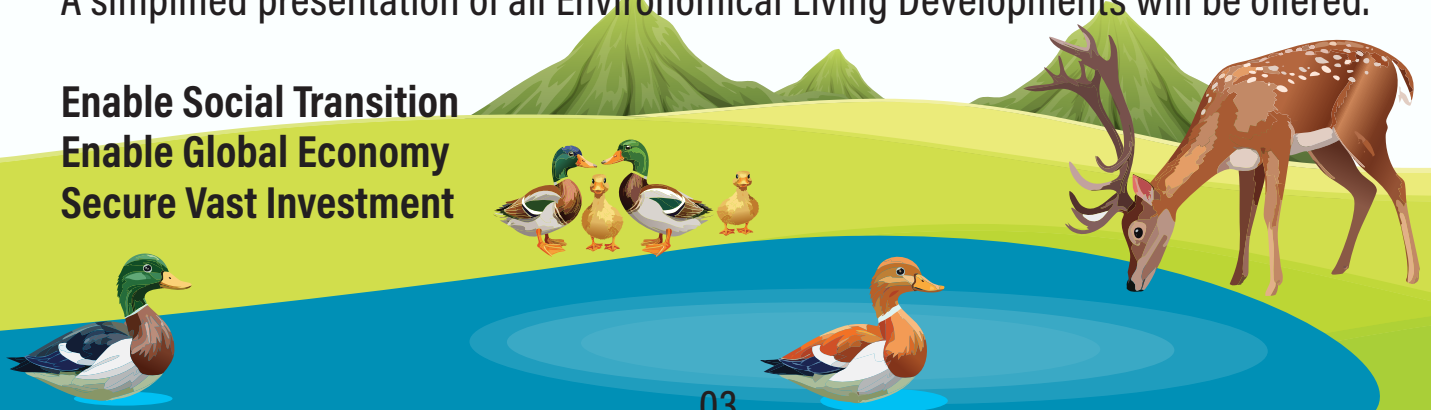
Environomical Living enables the integration of the economy, environment and society. The sole intention is to effectively eliminate all personal environmental negligence. The environment accomodates all life and must always be considered the priority.

Environomical Living applies a strategic business application that is leading+edge. All economical sectors are carefully included to ensure that everyone participates. In order for Environomical Living to be successful, everyone must be advantaged.

Environomical Living is presented in this book and the supporting series of books. A group of professionals and academics will evaluate the entire series of books. The mix will form a conceptual and academic network that applies strategic input.

The purpose is to effectively consider, accept, improve or change all possibilities. Environomical Living is designed to secure concept+related input and investment. A simplified presentation of all Environomical Living Developments will be offered.

**Enable Social Transition
Enable Global Economy
Secure Vast Investment**



Alternative Energy Systems Transitioning is Imperative Enable Planet Earth



Alternative Energy, on a global basis, must be carefully researched and developed. Inclusive applying of seven developing alternative energy sources is more than ideal. Alternative community+level energy systems are Environmental, effective and secure.

Solar will be set up to melt off ice and snow, plus enable rinsing off of dirt and doo. An east west rotation and blade+less systems will be applied on all wind generation. Both systems do not swat flying wildlife and can operate efficiently in gale winds.

Underground geothermal is highly effective and requires an engineered system. A deep hydrology geothermal lithium mine is best, as the deeper it is, the hotter it is. Spent brine will be repatriated or cleaned and carefully applied as alternative water.

The pumping of products through pipelines requires massive amounts of electricity. Tidal and Wave are two alternative energies that are ideal for powering of pipelines. Both are viable power sources and based on naturally occurring, infinite conditions.

Hydrology Mineral Mining offers Electrical Battery Storage and Nuclear Fusion Fuel. The Integrated Pipeline Network supplies saltwater to the Hydrology Mineral Mines. The intent of the Hydrology Mineral Mines is to mine minerals from brackish waters.

The transportation system, on a global basis, is polluting the air, lands and waters. Vehicle tires are mostly responsible for much of the micro-plastic on Planet Earth. The dandelion is being researched as an alternative rubber product and cancer drug.

Underground transport eliminates tire micro-plastic, traffic impact and ditch erosion. Another big advantage is asphalt heat and road cover will be effectively minimized. Road moisture will be absorbed, instead of causing flash floods and underpass pooling.

Appropriate Decentralized Energy Decentralization Offers Security Reduced Environmental Risk



Practically Enable Everyone **Multi+Purposed Application** **Environomical Living Malling**

The Environomical Living Concept is effectively designed to accommodate everyone. Including everyone is the ideal way to effect public+wide support and commitment. All public properties should be multi+purposed and enable an inclusive population.

Environomical Living will be effectively offered from an Environomical Living Mall. An Agricultural Centre that applies a fully operating Equine Centre will be included. Relative agricultural, settlement and resource history, etc., will also be included.

Related Interpretation will be offered in an adjoining Interpretive Ecotourism Hotel. The Interpretive Ecotourism Hotel will include concept+relative community history. The combination is unique and presents interpretive time travel with family revelry.

All related historical sites will be effectively researched and appropriately included. Interpretive Ecotourism Pubs will be developed on the most relative historical sites. The Interpretive Ecotourism Pubs enable interpretive time travel with adult revelry.

There are a multitude of ghost sites that offer Interpretive Ecotourism opportunity. This avails development of a series of relative Interpretive Ecotourism attractions. All Urban, Rural and Indigenous communities will be effectively enabled to take part.

All parties will combine in the supervising and enabling of Interpretive Ecotourism. The combination will easily attract an entirely broader spectrum of the population. The mall is an ideal way to off+set greenhouse gas emissions and consumer waste.

Interpretive Ecotourism products and services are sustainably based and offered. Historical accuracy will be accommodated to enable museum+quality interpretation. Interpretive Ecotourism fully enables the public to experience the past and future.

Interpretive Ecotourism **Off+Set Emissions and Wastes** **Museum+Quality Interpretation**



Inclusive Business Strategy
Total Economic Integration
Environmental Living Micro



The Environmental Living Mall is purposed to outperform any relative competition. Operations will be extended to the nth degree to offer unbeatable competitiveness. Shoppers will be able to effectively analyze product process from beginning to end.

The complete line-up of Environmental Living products and services will be offered. The automotive component will market every officially approved alternative vehicle. Alternative powered recharging and refueling will be applied to service this market.

The RV component will apply a full line-up of in-demand RV products and services. A network of RV campsites will be developed on undeveloped recreational land. The RV component will be most effectively combined with the housing component.

The grocery component will apply an Alternative Grow Systems Producers Market. The interiors component will include healthiness, comfort, longevity and recycling. The housing component will be effectively built to last an environmental life+time.

An environmental life+time involves efficiencies that offer retrofitting and longevity. Healthiness, comfort, efficiency and safety will be applied as regular build features. Maintenance will be minimized and year-round, outdoor use will become common.

The Interpretive Ecotourism Pubs will offer year-round historic based outdoor use. Land and amenities adjoining the mall will also offer year-round outdoor comfort. Resource based products will be provided to accommodate historical presentation.

Interpretive Ecotourism will be accredited by a related group of historical societies. Concept+relative camping, lodging, naturing, trekking and ghosting will be applied. This requires products like historical foods, drinks, artifacts, lifestyles and sites, etc.

Environmental Living Life+Time
Retrofitting and Longevity
Accredited Interpretive Ecotourism



Environomical Living Resourcing Fully Integrated Supplier Source Supplemental Resource Revenues



Conventional agriculture includes mono-culture practices that minimize biodiversity. Biodiversity enables life, as it is the basis to disease resistance and injury recovery. Alternative Grow Systems Plantations are fully designed to counter mono-culture.

Alternative Grow Systems Plantations supply product to the Environomical Living Mall. Alternative Growing and Interpretive Ecotourism are the main supply components. The purpose is to add revenue(s) to the Urban, Rural and Indigenous communities.

This necessitates the integration of an effective blend of the resource industries. The benefit is ecisting infrastructure is relative, but in somewhat of an altered way. Inputs are hydrology, landscape, wildlife, agriculture, forestry, mining and energy.

The intent is to enable Interpretive Ecotourism and a relative Producers Market. A full complement of organic products and services will be appropriately produced. Alternative Grow Systems requires use of Indigenous, Agricultural and Resource lands.

The three lands will be carefully chosen and applied, based entirely on compatability. The three lands will be combined to produce the absolute best possible outcome. This affiliation enables the availing of a most unique products and services line+up.

A Staging Station will be formed to manage all the resulting products and services. Operations will run much like the grain elevators and livestock markets of the past. The Staging Stations will purchase, process, certify, hold and distribute all product.

The staging stations will carefully supply+manage the Alternative Grow Systems. The affiliation will be blended into an Environomical Living Producer Cooperative. Cooperative operations will be effectively based on the use of fair trade practices.

Officially Certified Organic Products Affiliated Resourcing Plantations Unique Products and Services



Resourcing Agriculture Off+The+Land Products Organic Healthiness

Alternative Grow Systems will be aptly designed to avoid chemical and antibiotic use. The primary outputs are Landscape, Gamestock and Landrace Produce and Livestock. The complimentary outputs are Cottage, Interpretive Ecotourism and Renewables.

Landscape is effective agriculturing and foraging of indigenous and invasive flora. Gamestock includes the appropriate production of domesticated indigenous fauna. Landrace Production is the raising of historical agricultural crops and livestock.

Landrace Production involves agricultural husbandry relative to the settlement era. Cottage includes the making of authentic historical artifacts, provisions and fare, etc. Landscape Forestry applies tree scouting, marking, weeding, cutting and seeding.

Forestry waste will be applied as recovery product and biofuel, rather than burned. Forestry weed control will be altered to produce alternative products and incomes. Forests will be harvested selectively to effectively enable selective tree growth.

Selective forest harvesting allows sunlight to penetrate the overhead forest canopy. Sunlight penetration enables a selection of small flora to bloom on the forest floor. Indigenous flower, berry and fruit flora, along with the indigenous fauna will thrive.

Forest floor cropping is an ideal way to check fluctuating wood demand and prices. Forestry is a renewable industry, as is agriculture and most alternative energies. Renewables will accommodate green energy, net metering and lubricant recycling.

Oil is reuseable, when used as a lubricant and effectively recycled with minimal loss. Interpretive Ecotourism presents the historical presentation of past life and events. Habitat development effectively enables flora and fauna viewing and videography.

Settlement Era Approach Selective Tree Harvesting Canopy Penetration



Hydrology Mineral Mining Alternative Power Generation Alternative Water Supply

Fossil fuel(s) should be managed as public property that offers benefits in perpetuity. To enable perpetual use, extensive research and development must be undertaken. The purpose of the research and development is to eliminate burning of fossil fuel(s).

Oil Companies are increasingly burdened with expired wells that need remediation. Expired wells include inland brackish water, which has tremendous long-term value. The long-term value is Hydrology Mining, Alternative Energy and Alternative Water.

Hydrology mining includes salt, silica, lithium, zinc, manganese and many others. Brackish minerals offer value, especially lithium, as it is basic to the lithium battery. Lithium presents ever-increasing value, as it is also the fuel stock of Fusion Energy.

Hydrology Energy requires brackish, ocean and fresh water with special processes. Hydrology Energy Process includes Geothermal, Hydrogen, Osmotic, Tidal and Wave. Hydrology, Earth, Weather, Biodegradables, Battery and both Nuclears are the future.

Spent Hydrology Power Water will be repatriated or purified and re-applied. Re-application involves sending purified water to replace the fresh water taken. The re-applied purified water will dilute and freshen-up the fresh water side.

Excess purified water will feed an Alternative Water Pipeline Sprinkler Network. The Alternative Water will provide potable water and counteract drought and wildfire. Purification will be alternatively powered to facilitate sustainable competitiveness.

Alternative Energy will start conventionally, but run alternatively once up and running. Alternative Energy is multi-purposed and incorporates multiple business revenues. Hydrology Mining, Alternative Energy and Alternative Water enables sustainability.

Counteract Drought and Wildfire Sustainable Competitiveness Multiple Business Revenues



Alternative Power Generator Environmentally Safe Power Integrated Pipeline Network



Alternative Energy offers a way to move away from burning fossil fuel(s) for energy. Ocean, Brackish and Fresh Water can be alternatively applied practically anywhere. This makes Hydrology Energy Plant Generation doable almost anywhere in the world.

Enable extensive research and development of Hydrology Energy Plant Generation. This will include a way to clean and re+apply spent Hydrology Energy Plant Water. Effectively research and develop the minerals in Brackish, Ocean and Fresh Water.

Secure long+term availability to a vast network of Inland Brackish Water Aquifers. Secure long+term availability to Ocean Water, via a spill+proof pipeline infrastructure. It is essential to develop Hydrology Mineral Mining that isn't hazardous to waterlife.

Research and develop a prototypical small+scale Hydrology Energy Plant Generation. Upsize small+scale generating plant prototype to mid+scale and then large+scale. Secure a global group of small, medium and large Hydrology Energy Plant sites.

Hydrology Mineral Mining is the key process to Alternative Energy Plant Generation. The Alternative Water Pipelines will securely transport all three of the water types. The Alternative Water Pipelines will feed waters to the Integrated Pipeline Network.

Integration involves electricity, cables, wi+fi, pneumatics, waters, bitumen and fuels. The fuels component also includes sewage, as it is an infinite natural energy resource. A comprehensive Pipeline Integration effectively enables complete pipeline security.

Alternative Energy begins with Hydrology, Earth, Weather and Biodegradables. Once the above energies are common, Nuclear Fission and Fusion will be applied. Extensive electrical battery storage research and development will be undertaken.

Research and Develop World+Wide Approach Alternative Power



Alternative Windmill Farms Small Modular Reactors Green Hydrogen Production

Open-pit mountain coal mining is proposed in Alberta's coal-rich Rocky Mountains. This results in severe environmental degradation and marketing to China and India. Degradation includes mountaintop forest clear cutting and mountaintop removal.

This threatens water security, wildlife biodiversity, traditional land and historical view. It further threatens livestock grazing, economic diversity and national security. Hydrogen is proposed as a fuel product that enables the fossil fuel(s) industry.

Hydrogen emits zero emissions at use and is ideal for hard to electrify heavy industry. Blue Hydrogen is extracted from natural gas by using fossil fuel(s) and carbon capture. Green Hydrogen is extracted from natural gas by using sustainable energy sources.

Green hydrogen can also be extracted from water, via the water electrolysis process. East/West and Blade+less Windmill Farms will be built, instead of mountain coal mines. E/W and blade+less windmill farms do not harm flying wildlife and handle gale winds.

E/W and blade+less windmill farms will be built on mountains, above the tree line. A battery will be built in the mountain and fueled by e/w and blade+less windmill farms. Mine tunnelling will enable building e/w and blade+less windmill farms from within.

Green hydrogen will be effectively powered by Small Modular Nuclear Reactors. They are called SMR's and fueled by cartridges made from existing nuclear waste. This enables remote water-based communities to produce electrolysis green hydrogen.

Electrolysis green hydrogen offers sustainable energy to water-based economies. Electrolysis green hydrogen will minimize SMR draw and enable hydrogen production. The benefit of SMR's is they offer alternative energy that is fueled by nuclear waste.

Greenest Energy Approach Avail Conventional Transition Minimizing Nuclear Wastes



Economy and Environment Alternative Drilling Process Community Effective Growth



It is believed that most traditional Indigenous lands are still reasonably biodiverse. This makes Indigenous lands the ideal launching pad for environmental recovering. The Indigenous Community is advised to encourage an Alternative Energy Industry.

Alternative Energy offers the Indigenous and Energy Communities a new direction. The Energy Industry is advised to entirely research and develop Alternative Energy. Alternative Energy will accommodate social, environmental and economical security.

All major Fossil Fuel(s) Companies are aware that humankind needs to de+carbonize. The Drilling Industry is the very foundation of the Oil Industry and in serious decline. The Drilling Industry is advised to effectively take+up an Alternative Drilling Process.

Elon Musk has a leading+edge tunneling business in his group of business entities. Tunneling offers hazardous goods transfer an environment safe means of passage. Infrastructure, in general, will be effectively transitioned to an underground presence.

The fossil fuel(s) industry, pipelines and related infrastructure must become risk+free. Tunneling offers the transfer of multiple products, via a risk+free, secure application. Imagine a tunnel that offers, as many as nine different pipelines, secure passage.

Drilling is vertical and horizontal, therefore tunneling is a viable drilling undertaking. Environmental Living presents the Energy Industry with an equitable way to diversify. The multiple transfer of hazardous goods spreads the cost and enables profitability.

There are mountainous rivers that hazardous goods must cross that are raging fast. If any hazardous goods spill into one of these rivers, clean-up is entirely impossible. This is where tunneling would be effectively applied to accommodate sustainability.

Alternative Drilling Products Develop Alternative Energy Pipelines and Tunneling



**Land+Based Purpose
Long+term Projection
Enabling Biodiversity**



Humankind is based on growth and to apply growth Planet Earth is being degraded. Global population is surging and outpacing Planet Earth's ability to proliferate life. Accessing more arable land for food production is out, as all arable land is allocated.

A finite arable land base and growing food demand requires out+of+the+box thinking. An out+of+the+box way to think is to facilitate wilderness biodiversity and fare supply. Biodiversity is the environmental reality that accommodates Enabling the Duration.

Alternative Grow Systems Planations are a truly viable way to increase fare production. They were presented previously, as the most likely means to encourage biodiversity. The benefit is it is land based and avails Urban, Rural and Indigenous communities.

The need to recover nature is a fact and best performed by those closest to the land. The Indigenous, Agricultural and Resource communities are often one with the land. All three are inclined to save the land, but need to be presented with a means to do so.

Facilitating biodiversity requires a most effective inventorying of all related habitats. All aspiring participants will offer relatively select lands and inputs for consideration. Inclusive involvement will be assessed and present how to apply all offered inputs.

Considerations include history, as well as the resourcing and agricultural propensity. All qualifying submissions will be reviewed by an academic and conceptual network. The most ideal use of all the submitted properties will be researched and developed.

All three communities will unite to ensure biodiversity is enabled for the duration. They will most effectively unite and join forces to preserve and develop biodiversity. All the accredited participants will be officially referred to as "Stewards of the Land".

**Economics Requires Growth
Fully Used Arable Land Base
Ever Growing Food Demand**



Stewards of the Land Identity Related Lifestyle The Meaning to Life



Land based youth are well positioned and inclined to become Stewards of the Land. Youth will be officially approached to participate in the recovery of the environment. The main intention is to appropriately nurse the land back to health, via biodiversity.

Those that are mainstream can take+up numerous Environomical Living Careers. Environomical Living is all inclusive and facilitates a broad choice of relative careers. This brings on a truly oportune choice, to be a Steward on+the+land or off+the+land.

Youth will be presented with graphic novels that are identity related and motivating. The graphic novels will present the advantage and responsibility of being a Steward. All Stewards are availed to apply relative environomical research and development.

Land based communities are generally aware that the environment is in dire straits. Youth will be submersed in the complete recovery of all aspects of the environment. Environomical Living offers a most ideal and diverse opportunity for all participants.

Land based communities are effectively facilitated to become key economic drivers. Stewardship to the future of all Earthly life is a major responsibility and opportunity. Biodiversity is the means of effectively Enabling the Duration for all Earthly Life.

Habitat recovery commences with availing biodiverse habitats to buying customers. The Stewards will collectively offer scientifically based, effective habitat restoration. Enabling the Duration, through perpetual biodiversity, is the sole intent of the Stewards.

Stewards will supply biodiverse habitat development to all purchasers, big or small. Biodiverse habitat development will grow into the basis of the business community. Planet Earth's environment is the requisite of all Earthly life and must be preserved.

Land Based Residency Stewardship to Future Enable Perpetual Life



Increasing Wildfire Incidence Fire Season is Lengthening Smoke Related Health Issues

Wildfire incidence is steadily increasing, as unnatural climate-change is happening. Hot weather brings lightning and the hotter it becomes, the more lightning there is. So, it is fairly obvious that the more lightning there is, the more wildfire there will be.

Wildfire season is at least one month longer than it was in the 1970's, due to warming. Every plus degree of temperature, requires 15 degrees of added relative humidity. Relative humidity must keep up to temperature increase to counter plant mortality.

Wildfire in Canada, every year, covers an area close to half the size of Nova Scotia. Wildfire habitat destruction, wildlife death and public loss is steadily on the increase. A longer wildfire season also increases air pollution, which negatively impacts all life.

People with respiratory health conditions are especially at risk from wildfire smoke. One of the most detrimental pollutants, to at risk people, is fine particulate matter. Fine particulate matter causes coughing, congestion, throat irritation and chest pain.

The chance of living in a controlled environment is becoming an increasing reality. Stop and consider, the most basic controlled environment to exist in is a space suit. If we do not counteract climate-change, we will be living in space suits on Planet Earth.

The bottom line is drought and wildfire must be countered before they get out of hand. Even if climate-change is natural, do we just go with it as something we only fight? Of course not, we must develop alternative ways to counteract drought and wildfire.

A viable way to effectively counteract drought and wildfire is Hydrology Mineral Mining. Hydrology Mineral Mining is ideal, as it offers alternative minerals, electricity and water. Hydrology Mineral Mining offers economical sustainability and environmental security.

Counteract Drought and Wildfire Environment Saving Moisture Long+Term Environment Security



Reality Check Time
Requires Taking Action
Planet Earth Biodiversity



Global average temperature has increased one whole degree since the mid 1700's. Science advises, "we are on target to reach the two degree tipping point of no return". Once the two degree tipping point of no return is reached, reversing it is impossible.

Sea ice, icebergs, glaciers, snow pack and wildlife has been in decline for many years. After wintering at sea, polar bears usually need to swim for three days to reach land. Adult bears can generally make such an arduous swim, but the bear cubs are at risk.

Colonizing outer space is required, as it is not wise to rely on just one planet to exist. To save the planet and offer growth, resource development must target outer space. Unlimited organic family growth will be availed by outer space resource developers.

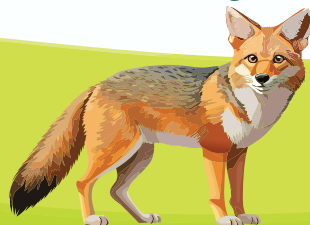
Humankind will find planets with water and then create Earth related atmospheres. Atmosphere development can be as easy as the developing of domed communities. It can also be as intricate as the development of a life+enabling earthly atmosphere.

Planet Earth is the cradle of all earthly life and means to accommodate biodiversity. Biodiversity enables all life, as it is the key to disease resistance and injury recovery. Natural habitat development is the way to enable biodiverse proliferation of all life.

All concept+approved participants will be officially presented as Stewards of the Land. Being entrusted to be Stewards of the Land will present identity+related confidence. The Stewards of the Land will most commonly facilitate environmental biodiversity.

The Stewards will present biodiverse habitat development(s) to the general public. The Stewards will enable biodiverse habitats on Planet Earth, and then outer space. Planet Earth will be the only planet to visit and enjoy a natural earthly holiday.

Global Warming Is Undeniable
Accommodate Biodiversity
Implement Environomical Living



**Monetize the Environment
Strategic Business Plan
Enable Sustainable Growth**



The simplest way of enabling the duration is to monetize the survival of Planet Earth. Monetization will effectively stimulate environmental, economical and social growth. This growth would be best undertaken, via the applying of a strategic business plan.

The strategic business plan will be offered in a format that is relatively easy to read. It will explain how to apply all required social, environmental and economical growth. It begins with research and development of alternatives, renewables and recycling.

The strategic business plan is to be started+up, via the use of a common approach. The common approach to be used is defined as entrepreneurial spirit and ingenuity. Entrepreneurial spirit and ingenuity applies intellectual creativity with calculated risk.

Intellectual creativity is truly an infinite resource and common trait of all humankind. Intellectual creativity will then be facilitated, via a generic educational teaching tool. The generic teaching tool to be applied is Science Fairs, only they will be monetized.

Intellectual creativity is the basis of all environmental, economical and social growth. All strategic input(s) will be secured, via an accredited intellectual property process. The accredited process applies the securing of copyrights, trademarks and patents.

Education is the launching pad to intellectual creativity and economical sustainability. Intellectual creativity is truly ideal, as effective performance is investment attractive. Science Fair Monetization is a doable way to add supplemental educational funding.

The Science Fairs will enable the grass+roots by including all students and workers. Science Fairs will avail research and development funding with intellectual creativity. Science Fair Monetization is an effective way to initiate a Public Income Guarantee.

**Spirit and Ingenuity
Intellectual Property
Intellectual Creativity**



Inclusive Sustainability New Transitional Economics Alternative Funding

A different way is required to enable environmental, economical and social growth. This involves taking a big picture view of where Planet Earth will be in 1,000 years. The big picture question is will Planet Earth be liveable in 1,000 years or abandoned?

Education is the best way to enable social, environmental and economical change. For the needed change to occur, education needs to secure vast alternative funding. A Science Fair Investment Forum offers a means to secure vast alternative funding.

Environomical Living is the advised direction of the Science Fair Investment Forum. Every single component of Environomical Living will be most effectively considered. All primary, secondary and post+secondary students and workers will participate.

Protection of all Science Fair Investment Forum intellectual creativity is guaranteed. All presented intellectual creativity will be properly reviewed, revised and applied. The intent is to ensure that all students become creative thinking problem solvers.

Sponsors will be secured to enable research and development of all creative ideas. The sponsors will offer funding, along with relative concept coaching and judgment. The sponsors will partner with the teachers, students, parents, family and friends.

Actual performance will earn research, development and educational accreditation. All applied and accredited intellectual creativity will earn a Public Income Guarantee. It will be called Creative Rights Revenue and be a highly sought after revenue base.

The Science Fair Investment Forum will be effectively and strategically prototyped. Communities and constituents with concept+related components will be applied. The intent is to enable every last person on Planet Earth to consider the big picture.

Science Fair Investment Forum Consider the Big Picture Enabling the Duration



Environomical Living Developing Strategic Business Partnership Managing Director Appointment



Environomical Living includes an operating system that is socially accommodating. Start+up includes the procuring of a concept+relative strategic business partnership. The procured partnership will elect a concept+relative Corporate Board of Directors.

The concept developer and co+developer will be principles on the Corporate Board. The board will effectively review, fine+tune and approve the strategic business plan. Once the strategic business plan is finalized, a managing director will be appointed.

The concept developer is fully concept+aware and assuredly the ideal appointment. The managing director will then implement the academic and conceptual network. The first thing the academic network must do is eoctend the strategic business plan.

The strategic business plan will be eoctended and issued to all participating networks. The conceptual and academic networks will enable the strategic business plan. The Corporate Board will accredit and then offer the plan to the managing director.

The strategic business plan is unprecedented, as it can be easily reviewed and revised. The managing director will be the initial managing director of all division start+ups. Division boards will be selected from the post secondary and conceptual networks.

Both networks will combine on the inclusive development of Environomical Living. The primary divisions are Programming and Eocpositioning, as they facilitate start+up. Programming will creatively apply all concepts, presentations, products and services.

Eocpositioning initiates Environomical Living on a Science Fair Investment Forum basis. The subsequent five are Resourcing, Stationing, Processing, Pastiming and Malling. The above subsequent five divisions were outlined previously in this presentation.

Conceptual Academic Network Business Start+Up Divisions Programing and Eocpositioning



**Public Investment Forum
Environmental Living Fund
Capitalized Development(s)**



The Science Fair Investment Forum will fully apply an Environmental Living Fund. The Environmental Living Fund is basically a Public Limited Partnership Fund (PLPF). Securing a minimum amount of research and development investment is the intent.

The Limited Partnership will comprise a blend of General and Sub+General partners. It also includes a minimum investment from a participating Limited Partnership. The General, Sub+General and Limited Partners will most appropriately cooperate.

All the required assets will be secured, as per the accredited strategic business plan. The Generals and Sub+Generals are responsible for all debts and operational costs. The Limiteds will offer concept+related performance, equity and capital investment.

The Generals, Sub+Generals and Limiteds will then elect the Fund Board of Directors. They will also facilitate all needed funding, infrastructure and staffing requirements. The Fund Board of Directors will be accommodated by the Corporate Board of Directors.

The required Investment Fund Prospectus will be fully researched and developed. Input that is needed to offer official government securities approval will be enabled. Leading+edge, in+house business technology will be applied to the Investment Fund.

The Investment Fund Prospectus will be readily developed and officially accredited. Environmental Living requires the securing of a minimum amount of public funding. Raising the minimum required amount of funding shows general public support.

An Annual General Meeting will be held and quarterly reports will be offered on+line. At the AGM, the Limiteds will be advised of all finished, working and future business. They will also be queried for relative input and offered re+investment opportunities.

**Investment Fund Prospectus
Secure Minimum Investment
All Inclusive Public Support**





ENVIRONOMICAL LIVING

©™

#01) FREE WILL DETERMINATION

#02) INCLUSIVE CONSCIOUSNESS

#03) DEMOCRATIC GOVERNANCE

#04) MULTILATERAL INSTITUTIONS

#05) INCLUSIVE SOCIAL EQUALITY

#06) ENLIGHTENED RULE OF LAW

#07) PROGRAMED INTELLIGENCE

#08) ENVIRONMENTAL SECURITY

#09) ECONOMICAL SUSTAINABILITY

ENABLING THE DURATION





ENVIRONMENTAL LIVING

© TM

#10) FULL SOCIAL COOPERATION

#11) FULL HEALTHCARE COVERAGE

#12) FULLY ENABLED EDUCATION

#13) CREATIVE RIGHTS REVENUE

#14) WORKPLACE COMPETENCE

#15) UPGRADING DEVELOPMENT

#16) LEISURE AND RECREATION

#17) RETIREMENT PROGRAMING

#18) END+OF+LIFE FULFILLMENT

ENABLING THE DURATION





ENVIRONOMICAL LIVING

SOCIAL, ENVIRONMENTAL AND ECONOMICAL

© TM

THE ENVIRONMENT IS SERIOUSLY THREATENED.
POLLUTION IS EVERYWHERE AND GETTING WORSE.
EVEN RECYCLABLES ARE NEGLIGENTLY DUMPED.

EVERY LAST COMMUNITY MUST BE SUSTAINABLE.
THIS PRESENTS UNPRECEDENTED OPPORTUNITY.
TRANSITIONING EARLY WILL PAY BIG DIVIDENDS.

environomicalliving.com

GEORGE BELFORD geo.belford@gmail.com 780.819.3777